

200 nm



Mag = 40.00 K X

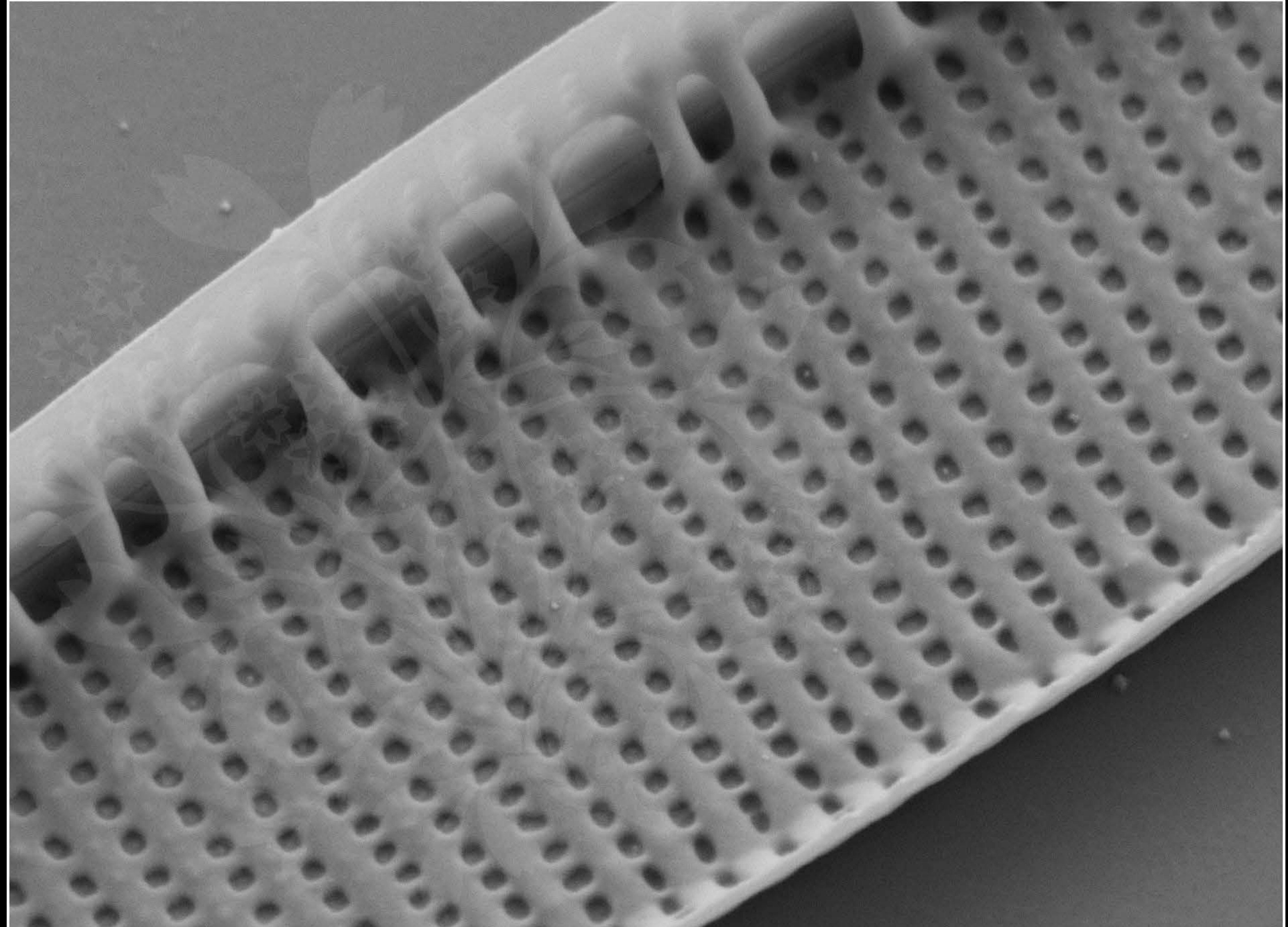
EHT = 5.00 kV

Signal A = SE2 Date :9 Oct 2018

WD = 4.0 mm

File Name = Npalea_SpainA2_01.tif





200 nm



Mag = 40.00 K X

EHT = 5.00 kV

Signal A = SE2 Date :9 Oct 2018

WD = 4.0 mm

File Name = Npalea_SpainA2_02.tif

